



**Fast, Easy Registration**

**> BY MAIL**

Mail your completed registration form with payment (no cash or credit card) to:  
Dede Ranahan  
College of Extended Learning  
San Francisco State University  
425 Market St., 26th Floor  
San Francisco, CA 94105-2406

**> IN PERSON**

(no cash)

**SFSU Downtown Center**

425 Market at Fremont Str., 2nd Fl.  
9 am-7 pm M-Th; 9 am-5 pm Fri.

**SFSU Campus**

One Stop Center  
1600 Holloway Avenue  
9 am-7 pm M-Th; 9 am-5 pm Fri.

*spring 2003*

*Mental Health Symposium* Registration Form - **Mail this entire page**

**Mental Health Symposium - March 1, 2003**

Participate in this major conference that will address mental health issues confronting educators, counselors, parents, university faculty, staff, students, consumers and mental health professionals working and living on the front lines.

Symposium Registration Fee: \$40 (includes parking, continental breakfast, box lunch, and program materials)

CEU Fee (additional): \$45 payable on site

SFSU is approved as a continuing education provider by the California Board of Behavioral Sciences (BBS Provider #PCE 2480) and by the Board of Registered Nursing (BRN Provider #13225).

**Registration deadline is February 14, 2003.** No refunds after this date. For refunds call 415/ 405-7751.

Seating is limited, register early. A limited number of **scholarships** for the registration fee are available and will be awarded in the order requests are received. (see box below) Send registration forms with the registration fee included and check "scholarship requested." Scholarship recipients will receive a registration fee refund in the mail after they attend the symposium.

Last Name			First Name			Middle Initial		
Address – number, street and apartment, if applicable								
City			State			Zip		
Day phone with area code			Evening phone with area code			email address		
School District / Grade Level								
How did you hear about the Mental Health Symposium?								
<input type="checkbox"/> Scholarship Requested			Date					

Type of Payment

Check - Make check payable to *SFSU College of Extended Learning (no cash)*

Check # \_\_\_\_\_ Account holder \_\_\_\_\_

Money Order/Cashier's Check

OFFICE USE - DATE RECEIVED

For more information, or if you would like to participate on the symposium planning committee, send an email to Dede Ranahan <dranahan@sfsu.edu> or call her at 415/ 405-7751.

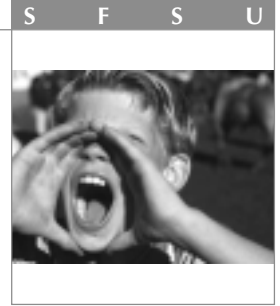
Program information, more registration forms and additional information will be available Jan. 2, 2003 at [www.cel.sfsu.edu](http://www.cel.sfsu.edu) (Type **symposium** in the search field and click on **GO**)



*mental health*

EDUCATION & WORKFORCE DEVELOPMENT ~ PROFESSIONAL DEVELOPMENT SERIES

www.cel.sfsu.edu



# Save the Date

**MARCH 1, 2003**

## **A MAJOR MENTAL HEALTH SYMPOSIUM for teachers and other front-line professionals**

SOUTH SAN FRANCISCO CONFERENCE CENTER  
255 South Airport Boulevard  
South San Francisco, CA 94080-6703

For those working and living on the frontlines, this symposium will focus on mental health and illness indicators, resources, new approaches and treatments, and the role of cultural and ethnic mental health belief systems.

The emphasis will be on hope and recovery and the importance of early identification and intervention for long-term mental health and wellness. Specifically for teachers (preschool-postgraduate) the symposium will provide tools to help you stay resilient in the classroom and to help you get help for your students so you can focus on teaching!



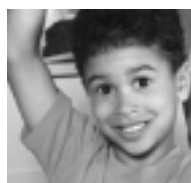
Program details, registration forms and additional information will be available Jan. 2, 2003 at [www.cel.sfsu.edu](http://www.cel.sfsu.edu) (Type **symposium** in the search field and click on **GO**)  
Registration forms (see back) will be accepted beginning January 2, 2003.

A limited number of **Scholarships** are available and will be awarded in the order requests are received. Send registration forms with the registration fee included and check "scholarship requested." Scholarship recipients will receive a registration fee refund in the mail after they attend the symposium.

### CEU CREDITS WILL BE AVAILABLE **ON SITE**

SFSU is approved as a continuing education provider by the California Board of Behavioral Sciences (BBS Provider #PCE 2480) and by the Board of Registered Nursing (BRN Provider #13225).

For further information, contact Dede Ranahan at [dranahan@sfsu.edu](mailto:dranahan@sfsu.edu) or call her at 415/405-7751



*Working For Better Mental Health Through Education*